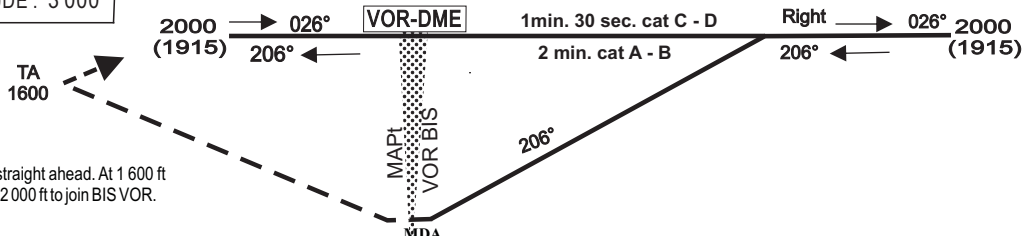


TRANSITION ALTITUDE : 3 000



Missed Approach : Climb straight ahead. At 1 600 ft QNH, turn right climbing to 2 000 ft to join BIS VOR.

ALT 85

RWY 21

5

0

1

5

10

DISTANCE (NM)

CAT	VORY				Circuit (R)				RVR for take-off CATA - B - C : 400 CAT D : 400
	OCA (OCH)	MDA	MDH	RVR(1)	RVR(2)	OCA (OCH)	MDA	MDH	
A	424 (339)	430 (340)		1300	1500	579 (450)	580 (450)		1500
B	424 (339)	430 (340)		1400	1500	763 (634)	770 (640)		1600
C	424 (339)	430 (340)		1600	1800	862 (733)	870 (740)		2400
D	424 (339)	430 (340)		1800	2000	862 (733)	870 (740)		3600

Temps

KT	MIN	SEC	KT	MIN	SEC
90			140		
100			150		
110			160		
120			170		
130			180		

Notes: - (1) With approach lights - (2) Without approach lights
- (3) Daytime only - OCH MDH AAL

AMDT10/22 : Update